



# BOVIBOOSTER WD SYSTEM ROTARY

Automatic hoof wash and disinfection  
For outside rotary milking systems

---

Sejrupvej 27, 7323 Give, Denmark

[www.bovohoofcare.dk](http://www.bovohoofcare.dk) | [info@bovohoofcare.com](mailto:info@bovohoofcare.com)

Dear customer,

Thank you for purchasing the Bovibooster WD System Rotary.  
This product is designed and manufactured by Bovi Hoof Care  
Bovi Hoof Care  
Sejrupvej 27  
7323 Give  
+45 21756735

If you need help with product, please contact your dealer. This product is manufactured according to the applicable EU-regulations.

Spare parts can be obtained through your dealer point of purchase.

## Preface

### Manual Contents

This manual contains the information necessary to operate and maintain the Bovibooster WD System Rotary. Study and understand this information thoroughly before you operate the Bovibooster WD System Rotary. Failure to do so could result in personal injury or damage to the equipment. Please consult your local dealer if you do not understand the information in this manual, or if you need additional information.

All information in this manual has been compiled with care.

The recommendations are meant to serve as guidelines. All instructions, pictures and specifications in this manual are based on the latest information that was available at the time of publication. Your Bovibooster WD System Rotary may comprise improvements, features or options that are not covered in this manual.

### Applicability

The table below shows the type numbers of Rotary – Bovibooster WD System, for which this manual is applicable, and the software version the procedures are based on.

Model	Type	Serial no.
Bovibooster WD System Rotary	20.0010	>00000

### Software version

The description, operation and procedures in this manual are based on the software version:  
*JE935\_1*

## Registration

The nameplate is attached to Bovibooster WD System Rotary. Always include the type and serial numbers of your machine when you contact your local dealer and service provider or order spare parts.

*Figure 1 Bovibooster WD System Rotary Nameplate*

We suggest you complete the table below with the type and serial numbers of your Bovibooster WD System Rotary. This makes sure you can easily find the information.

Bovibooster WD System Rotary	
Serial number	

## Contact Number Local Service Provider

We suggest you write the telephone number and email address of your local service provider contact in the table below. This makes sure you can easily find the information.

Telephone number	
E-mail address	

# Table of Contents

1	INTRODUCTION.....	7
2	SAFETY.....	8
2.1	Introduction .....	8
2.2	Signal Icons.....	8
2.3	Safety Instructions .....	9
2.3.1	General Safety.....	9
2.3.2	Electrical Safety.....	9
2.3.3	Chemical Safety.....	9
2.3.4	Operating Safety .....	10
2.3.5	Maintenance Safety .....	10
2.4	Warning & Safety Decals.....	11
2.4.1	Explanation of Warning & Safety Decals .....	11
2.4.2	Location of Warning & Safety Decals, Bovibooster WD System Rotary system .....	12
2.4.3	Location of Warning & Safety Decals, Rotary PD 15.....	13
2.4.4	Maintenance of Warning & Safety Decals .....	13
3	SPECIFICATIONS .....	14
3.1	Dimensions and Weight .....	14
3.2	External Requirements.....	14
3.2.1	Air Supply .....	14
3.2.2	Electrical Power .....	14
3.2.3	Water Supply.....	14
3.2.4	Precautions .....	15
4	DESCRIPTION, OPERATION & ADJUSTMENT.....	16
4.1	Bovibooster WD System Rotary System .....	Fejl! Bogmærke er ikke defineret.
4.2	Bovibooster WD System Rotary system Main Components Layout .....	16
4.3	Main Components Description & Operation.....	18
4.3.1	Enclosure.....	18
	Remove/install enclosure cover .....	19
4.3.2	Electrical control Unit .....	20
4.3.3	PowerDos 15 care pump.....	21
4.3.3.1	How to remove/install the nozzle bar cover plate .....	23
4.3.3.2	How to adjust nozzle bar spray angle .....	23
4.3.3.3	How to replace a nozzle.....	25
4.3.4	Signal Installation .....	26
4.4	Bovibooster WD System Rotary Care unit .....	26
4.5	Bovibooster WD System Rotary CARE system Main Components Description & Operation.....	26
4.5.1	Enclosure.....	26
4.5.1.1	Remove enclosure cover.....	26
4.5.2	Electrical control box .....	27

4.5.2.1	How to open/release air pressure .....	27
<b>4.6</b>	<b>Component/cable Markings Table .....</b>	<b>28</b>
4.6.1	INDSÆTTE DIAGRAM FRA JE .....	28
<b>5</b>	<b>OPERATING INSTRUCTIONS.....</b>	<b>28</b>
<b>5.1</b>	<b>Bovibooster WD System Rotary keypad .....</b>	<b>28</b>
<b>5.2</b>	<b>Signal Adjustment.....</b>	<b>29</b>
5.2.1	“Parameters to adjust” (find ny overskrift) .....	29
5.2.2	How to do.....	29
<b>5.3</b>	<b>Alarms, Bovibooster WD System Rotary .....</b>	<b>30</b>
5.3.1	Alarm signals .....	30
5.3.1.1	How to identify .....	30
5.3.1.2	How to release .....	30
5.3.1.3	Troubleshooting.....	30
<b>6</b>	<b>FROST PROTECTION.....</b>	<b>30</b>
<b>6.1</b>	<b>Empty wash system of liquid .....</b>	<b>31</b>
<b>7</b>	<b>MAINTENANCE.....</b>	<b>32</b>
<b>7.1</b>	<b>Weekly Visual Inspection .....</b>	<b>32</b>
<b>7.2</b>	<b>Semiannually.....</b>	<b>32</b>
<b>7.3</b>	<b>Annually.....</b>	<b>32</b>
<b>8</b>	<b>DISPOSAL.....</b>	<b>34</b>
<b>9</b>	<b>GLOSSARY OF TERMS.....</b>	<b>35</b>
<b>10</b>	<b>EC-DECLARATION OF CONFORMITY .....</b>	<b>36</b>

# 1 Introduction

The Bovibooster WD System Rotary is an automatic dairy cow cluster and hoof cleaning and care system, for rotary milking systems.

The Bovibooster WD System Rotary \_\_\_\_\_, and the nozzle bar is installed behind the hooves.



**This manual is designed for use on an electronic device, such as a PC, an iPhone, Android phone, iPad or Android Tablet.**

---

## 2 Safety

### 2.1 Introduction

The Bovibooster WD System Rotary is an automated machine. Therefore, it is of the utmost importance to obey all safety instructions.

The warning and safety decals on your Bovibooster WD System Rotary and the signal icons in this manual identify important safety messages. Be alert to possible hazard when you see the symbols. Follow the instruction of the safety message.

### 2.2 Signal Icons

Especially note the safety messages, when you encounter the signal icons Warning, Caution and Danger, in this manual.

The signal icon for each message uses the following guidelines:



**Warning**

Indicates a hazardous situation which, if not avoided, could result in death or serious injury.

---



**Caution**

Indicates a hazardous situation which, if not avoided, could result in minor or moderate injury.

---



**Danger**

Risk of electrical shock.

---



**Notice**

Is used to address practices/functions not related to physical injury e.g. equipment or property damage.

---



**Tip**

*Indicates information that may help the reader, but not hazard related.*

---



**Notice**

Risk of damaging equipment during periods of temperatures below 0 °C.

---



## 2.3 Safety Instructions

- YOU are responsible for SAFE operation and maintenance of your Bovibooster WD System Rotary. YOU must make sure that you and anyone else who is going to operate, maintain, or work in the vicinity of the Bovibooster WD System Rotary knows all the related SAFETY information in this manual.
- YOU are the key to safety. Good safety practices protect you and the people around you. Make these practices a working part of your safety program. Make sure EVERYONE who operate, maintain or work obeys the safety precautions. Do not risk injury or death by ignoring good safety practices.

### 2.3.1 General Safety

- Read and understand the manual and all safety signs before you connect power supplies to operate, maintain or adjust the Bovibooster WD System Rotary.
- Bovibooster WD System Rotary owners must train operators before they operate the Bovibooster WD System Rotary. Review safety related requirements with all machine operators annually.
- A person who has not read and understood all safety and operating instructions is not permitted to operate or maintain the Rotary – Bovibooster WD.
- Keep unauthorized persons, especially small children, away from the Bovibooster WD System Rotary at all times.
- A first-aid kit, especially an eye wash station, must be available near the Bovibooster WD System Rotary. Store it in a visible place.
- Wear the correct protective clothing and equipment. Disconnect and isolate the electrical power supply, release pneumatic pressure before you clean or do maintenance on the Bovibooster WD System Rotary.
- Only use the Bovibooster WD System Rotary in a frost-free environment.
- Do not modify the Bovibooster WD System Rotary in any way. Unauthorized modification may impair the function and/or safety and could affect the life of the equipment and safety of operators.
- Contact your dealer and service provider if you have any questions.

### 2.3.2 Electrical Safety

- Only an authorized electrician is allowed to install the electrical power supply wall socket for the Bovibooster WD System Rotary.
- Make sure that the grounding of the electrical system and all parts of the Bovibooster WD System Rotary is functional and meet the local rules and regulations.
- Replace any damaged electrical lines, switches and components immediately. This must always be done by an authorized technician.

### 2.3.3 Chemical Safety

- The Bovibooster WD System Rotary uses chemicals for disinfection purposes.
- Read the chemical safety instructions and keep the safety data sheets stored accessible for all Bovibooster WD System Rotary operators.

- Always wear protective gloves and safety goggles when you do work on parts where a chemical product flows through.
- Bovi Hoof Care is not liable for, and does not cover under warranty, any damage or harm due to the use of chemical products not meeting the Bovi Hoof Care specifications.
- The safety data sheets of the Bovi Hoof Care products are available at [www.bovihoofcare.com](http://www.bovihoofcare.com)

#### 2.3.4 Operating Safety





- Read and understand the Bovibooster WD System Rotary manual and all safety signs before you connect power supplies to operate, maintain or adjust the Bovibooster WD System Rotary.
- Only trained personnel are permitted to operate the Bovibooster WD System Rotary.
- Always install all covers before you operate the Bovibooster WD System Rotary.
- Before pneumatic pressure is supplied to the Bovibooster WD System Rotary, make sure all parts are tight and that all hoses and fittings are in good condition.
- Contact your dealer and service provider if you have any questions.

#### 2.3.5 Maintenance Safety

- Read and understand the applicable manual and all safety signs before you connect the power supply to operate, maintain or adjust the Bovibooster WD System Rotary.
- Only trained personnel are permitted to maintain the Bovibooster WD System Rotary.
- Take extreme care when you work near or with pressurized pneumatic systems. Always depressurize the Bovibooster WD System Rotary before you work on it.
- Wear protective clothing and safety goggles when you do work on the pneumatic system.
- Wear protective gloves and safety goggles when you do work on parts where disinfection fluids flow through.
- Always read and understand the chemical safety data sheet before you do work on the chemical systems. Make sure all covers are installed when maintenance work is complete.
- Only use approved spare parts, and make sure they are only installed by authorized technicians.
- Contact your dealer and service provider if you have any questions.

## 2.4 Warning & Safety Decals



### 2.4.1 Explanation of Warning & Safety Decals

Bovibooster WD System Rotary	
Decal	Explanation
	<p><b>Danger: Hazardous voltage.</b>  <i>Disconnect the power plug from the socket before doing maintenance, adjustment or repair on the Rotary – Bovibooster WD.</i></p>
	<p><b>Warning sign: Corrosive liquid.</b>  <i>Risk for serious injury. Obey all applicable health and safety rules. Avoid contact between the liquid and skin or eyes. Wear gloves, safety goggles and protective clothing.</i></p>
	<p><b>Mandatory sign.</b>  <i>Wear safety goggles before doing maintenance, adjustment, repair or test on the Rotary – Bovibooster WD.</i></p>
	<p><b>Mandatory sign.</b>  <i>Wear safety gloves before doing maintenance, adjustment or repair on the Rotary – Bovibooster WD.</i></p>



2.4.2 Location of Warning & Safety Decals, Bovibooster WD System Rotary

### 2.4.3 Location of Warning & Safety Decals, Rotary PD 15

	<p><b>Mandatory sign</b> Wear safety goggles before doing maintenance, adjustment, repair or test on the Rotary – Bovibooster WD.</p>
	<p><b>Mandatory sign</b> Wear safety gloves before doing maintenance, adjustment or repair on the Rotary – Bovibooster WD.</p>
	<p><b>Notice</b> Risk of damaging equipment during periods of temperatures below 0 °C.</p>
	<p><b>Warning</b> Indicates a hazardous situation which, if not avoided, could result in death or serious injury.</p>



### 2.4.4 Maintenance of Warning & Safety Decals

Safety decals show important and useful information that will help you to safely operate and maintain the Rotary – Bovibooster WD.

Obey the instructions below to make sure that all the decals stay in the correct position and remain in good condition.

- Always keep the safety decals clean and readable. Clean the safety decals with soap and water. Do not use mineral spirits, abrasive cleaners or other similar agents that may damage the safety decals.
- Replace safety decals that are missing or that are illegible.
- Safety decals can be purchased from your dealer and service provider.

## 3 Specifications

### 3.1 Dimensions and Weight

#### Bovibooster WD System Rotary

- Height: 69 cm
- Depth: 98 cm
- Width: 66 cm
- Weight: approx. 86 kg

#### Rotary PD 15

- Height: 51 cm
- Depth: 10 cm
- Width: 17.3 cm
- Weight: Approx. 15 kg

### 3.2 External Requirements

#### 3.2.1 Air Supply

- Rotary PD 15 working pressure: 6-8 bar (87 – 116 PSI)
- Max. Pressure: 8 bar (116 PSI)

#### 3.2.2 Electrical Power

- Voltage [U<sub>e</sub>]: 380-400VAC 3PH+N+PE
- Frequency Range: 50/60Hz
- Max. Fuse size: 16 A type gL-Gg
- I<sub>sc</sub>max = 10kA



*Install the wall socket in a location easily accessible for persons, in case of emergency or maintenance.*

---

#### 3.2.3 Water Supply

- Pressure: 2-5 bar (29 – 72.5 PSI)
- Water flow rate: 8 – 48 l/min (2 – 12.7 gpm)
- Water temperature: 0 to 20°C. (32 to 68 °F)

- Always use potable water (fresh tap water)

### 3.2.4 Precautions



The Bovibooster WD System Rotary must be installed in a frost-free environment.

---



The water quality worldwide is different from area to area. The water quality can have influence on the lifetime of certain components of the **Bovibooster WD System Rotary system**. Also, the water used for the outside cleaning of the device could harm certain components (e.g. cover), even if it is made of stainless steel.

---



Do not install the Bovibooster WD System Rotary system where it can be subject to splashing or spaying of fluids.

---



Do not install the Bovibooster WD System Rotary system in a place where it is accessible for cows.

---

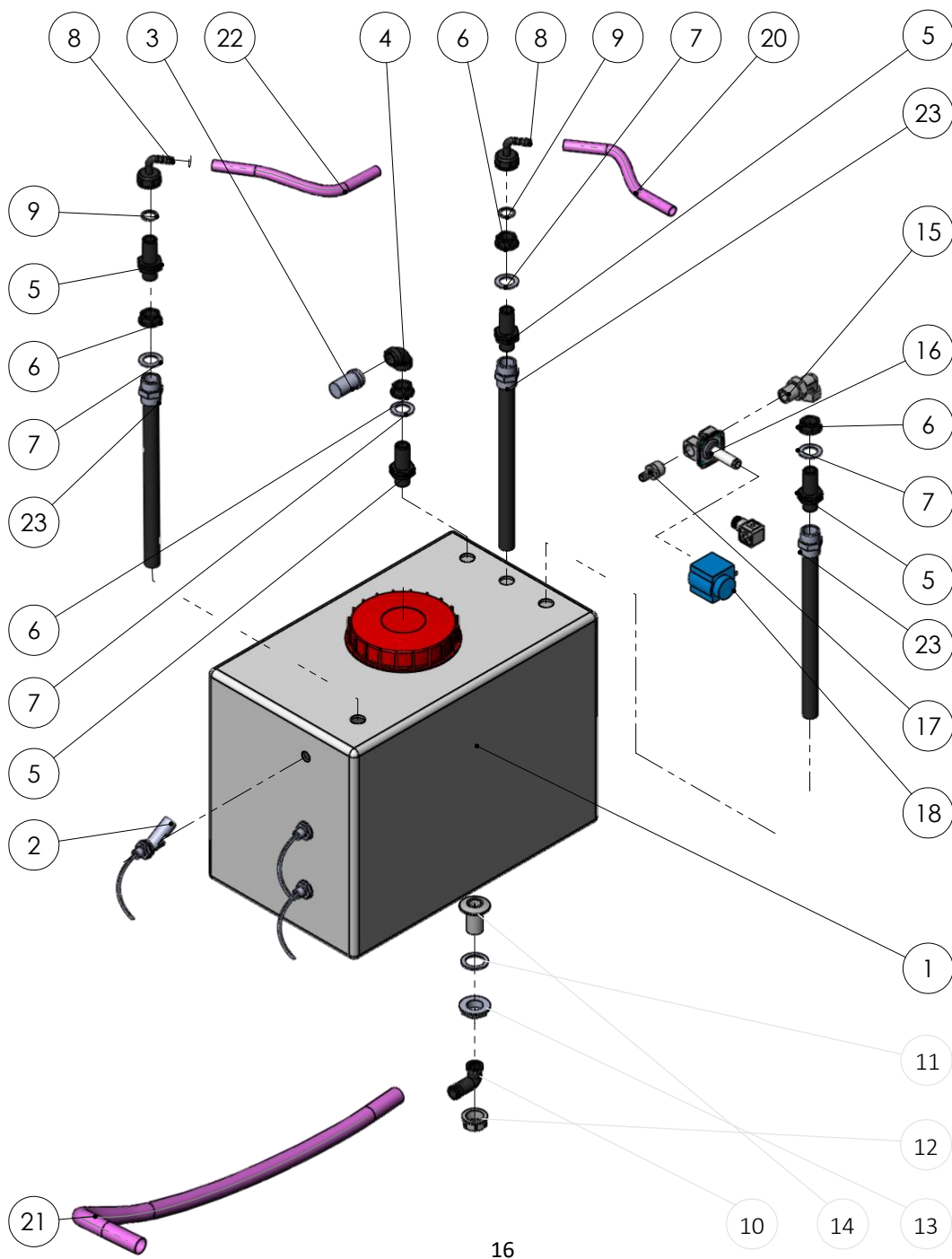
## 4 Description, Operation & Adjustment

### 4.1 Bovibooster WD System Rotary

The Bovibooster WD System Rotary is a stand-alone device.

The Bovibooster WD System Rotary needs one electrical start signals, a 6-8 bar air supply, a water supply and a 400-volt 3 phase power supply.

### 4.2 Bovibooster WD System Rotary Main Components Layout

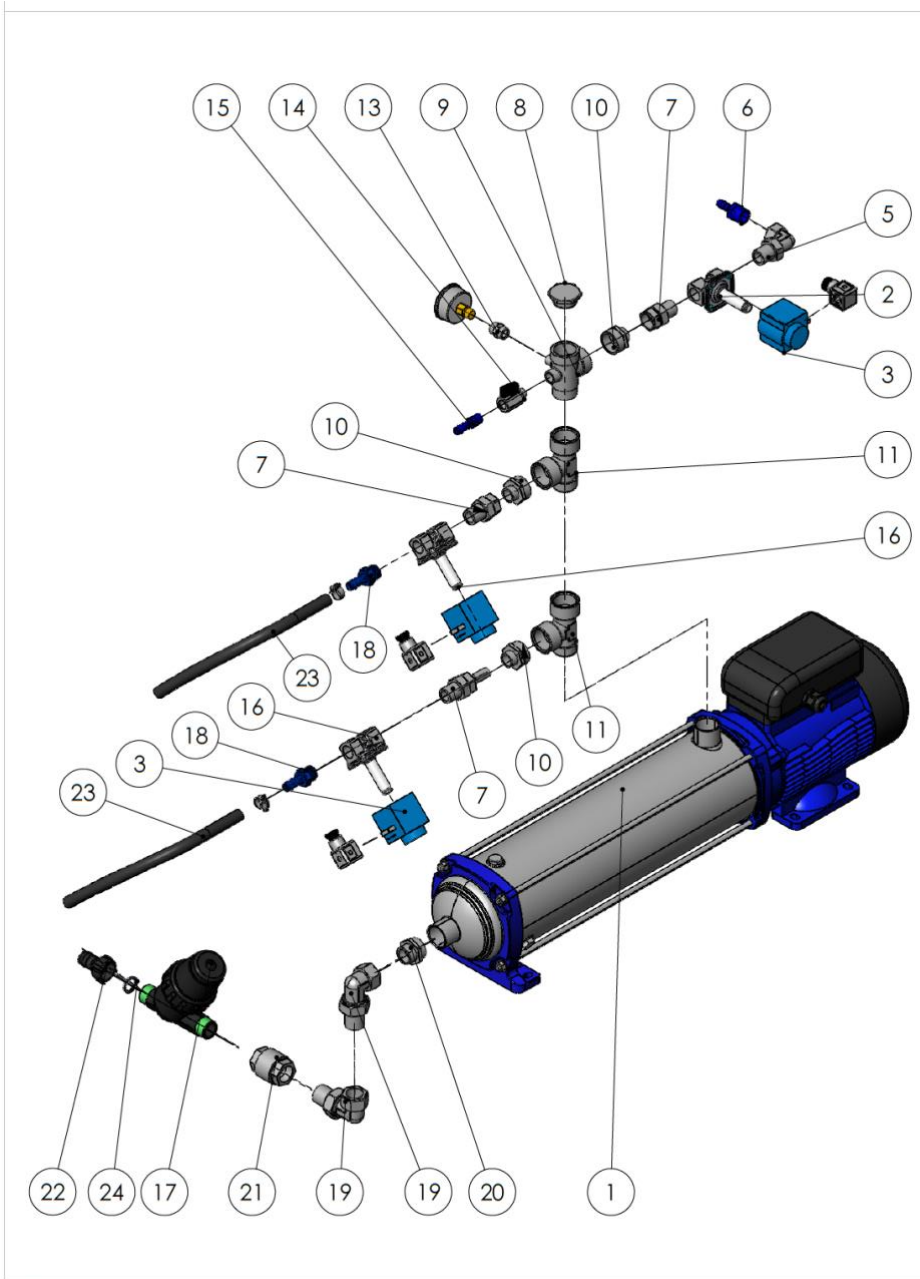




## Spare parts list

Pos. no.	Item number	Description	Note	Quantity
1	99901954	Tank for Bovibooster WD System Rotary System		1
2	LS303-51N	Level sensor		3
3	E370-4	Filter for check valve ½"		1
4	A121-4	Angle 90 degrees PP ½" BSPP		1
5	A128G-4 (1)	Hose stud		4
6	A129-4	Locknut ½" PP		4
7	A139-4	Gasket Ø33xØ21x2		4
8	A106-1PP	Hose fitting Ø10x1/2" flat 90 degrees		2
9	E16-24I	Gasket Ø24xØ18x2		3
10	A137-5A	Hose stud		1
11	A139-5	Gasket Ø39,5xØ27,5x2,5		1
12	A129-5	Locknut ¾" PP		1
13	A108-3PP	Nut ¾" PP		1
14	A-106-3PP-0	Hose fitting Ø20x3/4" flat 90 degrees		1
15	405001004	Angle union ½"		1
16	1249	Danfoss valve		1
17	E34-20	Hose connector in steel 12x1/2"		1
18	018F7658	Danfoss coil 12 V		1
19	DANFOSS DIN plug			1
20	99902025	Hose		1
21	99902022	Suction hose Ø19		1
22	99902024	Return hose		1
23	AR22-4	PVC muffle ½"x½"		3
24	99902026	Pipe API-20-1		3

# Water pump unit



21042020

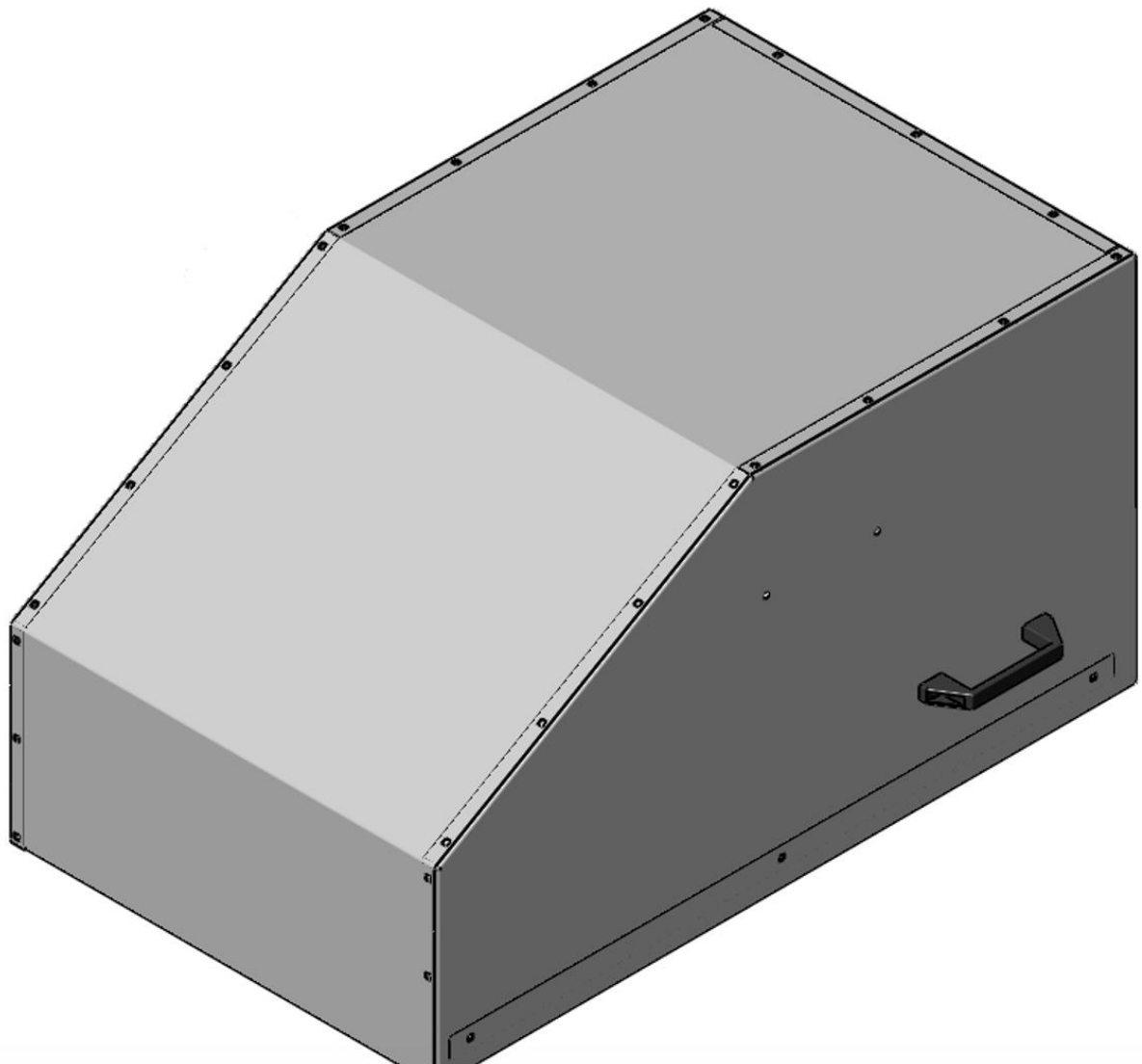
Pos. no.	Item number	Description	Note	Quantity
1	1HM25S15T5RQBE	Pressure pump		1
2	1249	Danfoss valve		1
3	018F7658	Danfoss coil 12 V		3
4	DANFOSS DIN stik			3
5	405001004	Angle Union ¼"		1
6	A1-15	10 mm x ¼"		1
7	405000004	Union ½"		3
8	E9-6	End cap 1"		1
9	1500128	5 ways fitting		1
10	E1552-6-4	Barrel nipple 1"		3
11	E22-6	T-piece 1" F-F-M		2
12	GC17-11	Manometer 3/8"		1
13	E8-7	Coupler for manometer 3/8"		1
14	E311-2	Ball-o-Fix ball valve		1
15	A1-13	10 mm x 1-4"		1
16	1255	Danfoss valve		2
17	323034	Filter		1
18	A1-21	12 x ½" male		2
19	405001006	Angle Union with O-ring ¾"		2
20	E1552-6-5	Barrel nipple with reduction 1"-3/4"		1
21	E360-5	Check valve 3/4"		1
22	A13-5	Hose nipple with nut plus gasket Ø19 x ¾"		1
23	99902023	Longlife PA12 Ø16 x Ø13		2
24	E16-24I	Gasket Ø24 x Ø18 x 2		1

The enclosure base and cover are made of AISI 304 stainless steel. The main function of the enclosure is to protect the Bovibooster WD System Rotary internal components from external damage.

*Remove/install enclosure cover*



Always wear protective gloves when handling sheet metal parts.



#### 4.3.2 Electrical Control Unit

The two electrical control units control all operations of the Bovibooster WD System Rotary. It consists of two polycarbonate base and a polycarbonate one cover fitted with buttons. The main components inside box on wash unit are a 24Vdc power supply and a PLC.



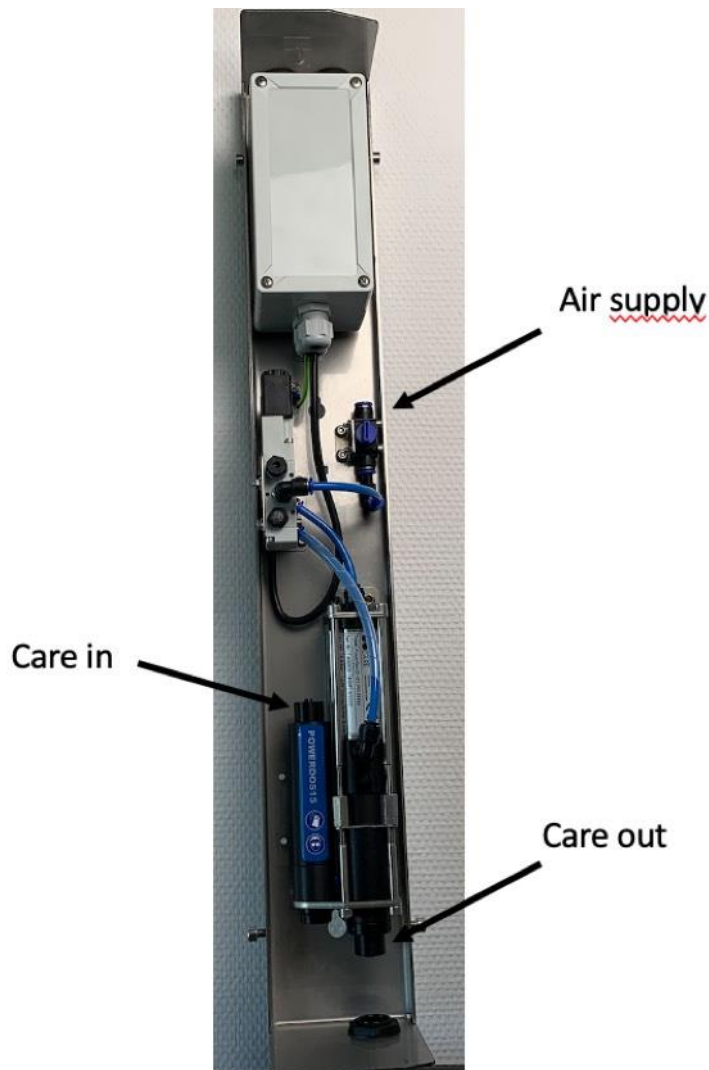
---

**Only authorized technicians are allowed to do work inside the Bovibooster WD System Rotary control unit cabinet.**

---

#### 4.3.3 PowerDos 15 care pump

- Amount per stroke: 15 ml.
- Maximum air supply pressure: 8 bar.



The Bovibooster WD System Rotary nozzle bar is designed to fit all outside rotary milking systems. The nozzle bar consists of three main components. The base plate, cover plate and two or four nozzle fixations, fitted with standard flat spray nozzles.

- Standard nozzle bar spray angle is 87° (can be adjusted), check *figure 9*.
- Standard nozzle spray angle is 25°/40°. With Capacity size 20 for wash and 06 for care spray.
- The nozzles must always spray parallel with the rotary floor, 20 mm above the floor. **The nozzle vertical spray angle is fixed**, check *figure 5*.
- The horizontal nozzle angle must always be level, check *figure 6*.

- Best average spray coverage, check *figure 8*.

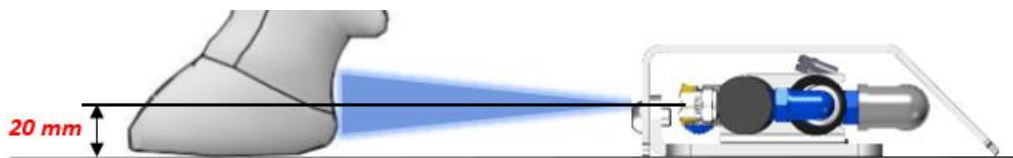


Figure 3 Nozzle bar vertical spray angle and height



Figure 4 Horizontal nozzle angle spray pattern



Figure 5 Best average spray coverage





#### 4.3.3.1 *How to remove/install the nozzle bar cover plate*

- Remove the bolts.



Always reinstall the nozzle bar cover plate, when the work on the nozzle bar is finished.

---

#### 4.3.3.2 *How to adjust nozzle bar spray angle*



**Risk of chemical spray**

Always wear safety goggles and gloves when you do work on the Rotary – Bovi Booster WD care or wash system.

---



Always disconnect the Bovibooster WD System Rotary power supply to avoid unintended operation when working on the nozzle bar.

---

- Remove the nozzle bar cover plate, check
- Loosen the two M6 x 6 mm bolts with a 5 mm hex key until you can adjust the nozzle bracket, check *figure 24*.
- Tighten the M6 x 6 mm bolts with a 5 mm hex key, when you have found the desired angle.

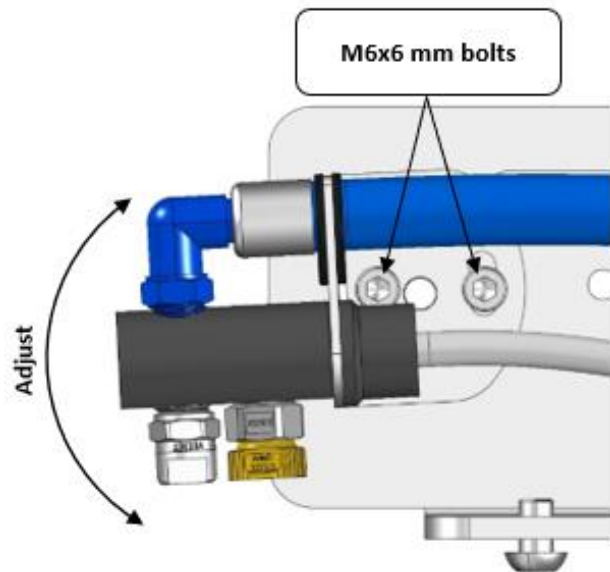


Figure 6 Adjust nozzle bar spray angle



#### 4.3.3.3 How to replace a nozzle



##### Risk of chemical spray

Always wear safety goggles and gloves when you do work on the Bovibooster WD System Rotary care or wash system.



Always disconnect the Bovibooster WD System Rotary power supply to avoid unintended operation when working on the nozzle bar.



The wash nozzle and care nozzle holder must be sealed with 6 rounds of 12 x 0,075 mm PTFE sealing tape.



It is recommended to replace both nozzles at the same time to keep the spray patterns similar.

#### Replace a Wash spray nozzle

- Remove the nozzle bar cover plate.
- Loosen the nozzle thread counterclockwise and remove the nozzle. Use a 14 mm spanner.
- Clean nozzle holder thread from sealing tape.
- Seal the new nozzle with 6 rounds of 12 x 0,075 mm PTFE sealing tape.
- Install the new nozzle, the nozzle must be turned 4-4,5 rounds. The distance from the tip of the nozzle to the nozzle holder should be 17-18 mm, *check figure 26.*

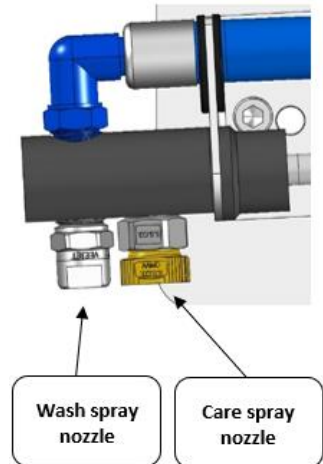


Figure 7 Replace nozzle

#### Replace a Care spray nozzle

- Remove the nozzle bar cover plate.
- Turn nozzle 45° in counterclockwise direction and remove.
- Clean nozzle holder from deposition.
- Install new nozzle. Turn nozzle 45° in clockwise direction.

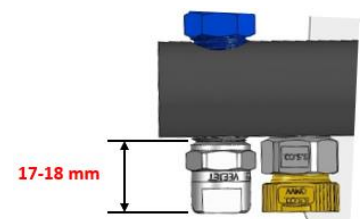


Figure 8 Nozzle tip to nozzle holder distance

#### 4.3.4 Signal Installation



### 4.5 Bovibooster WD System Rotary CARE system & Main Components Description & Operation

#### 4.5.1 Enclosure

The enclosure base and cover are made of AISI 304 stainless steel. The main function of the enclosure is to protect the Bovibooster WD System Rotary care pump internal components from damage.

##### 4.5.1.1 Remove enclosure cover



Always wear protective gloves when handling sheet metal parts.

- Loosen the two bottom fix bolts about 5 mm, using a 5 mm hex key. Pull the bottom of the cover towards yourself and lift the cover off, check *Figure 28*.
- Reinstall the cover and tighten the two **bottom** fix bolts.

Open  
before first  
start.



*Figure 9 Second care pump cover*

#### 4.5.2 Electrical control box

The electrical control box is connected to the Bovibooster WD System Rotary electrical control unit, with 10x0.75mm<sup>2</sup> control cable.

The box consists of a PCB board, a care test button and two pressure switches for start signal.

##### 4.5.2.1 How to open/release air pressure

*Figure 10 Electric control box*



**Risk of chemical spray**

Always wear safety goggles and gloves when you do work on the Bovibooster WD System Rotary care or wash system.

- Turn the hand valve 90° in counterclockwise direction to turn OFF air supply and release air pressure, check *figure 30*.
- Turn the hand valve 90° in clockwise direction to turn ON air, check *figure 30*.



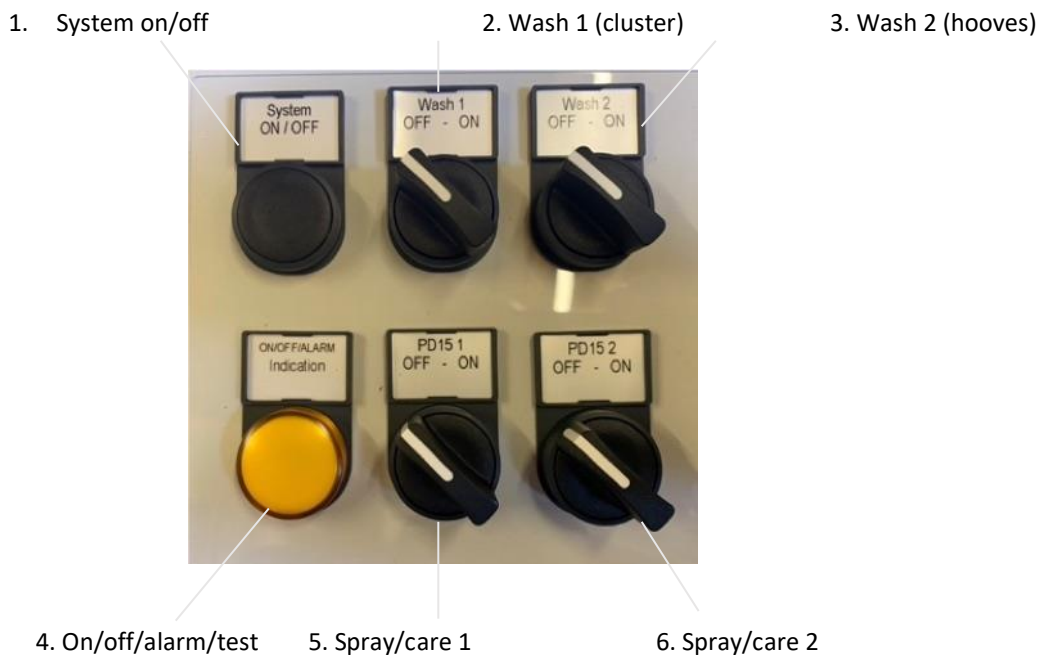
Figure 11 Hand valve in open position

## 4.6 Component/cable Markings Table

### 4.6.1 INDSÆTTE DIAGRAM FRA JE

# 5 Operating Instructions

## 5.1 Bovibooster WD System Rotary Keypad



## 5.2 Signal Adjustment

### 5.2.1 "Parameters to adjust" (find ny overskrift)

T1	Set Value: On-delay Timer03Second000Milliesecond Comment: On-delay wash 2
T2	Set Value: On-delay Timer01Second010Milliesecond Comment: On-delay wash 1
T3	Set Value: On-delay Timer02Second000Milliesecond Comment: Wash 2 timer
T4	Set Value: On-delay Timer01Second500Milliesecond Comment: Wash 1 timer

Tb	Set Value: On-delay Timer01Second010Milliesecond Comment: on-delay PD15 1
Tc	Set Value: On-delay Timer01Second010Milliesecond Comment: on-delay PD15 2

### 5.2.2 How to do

Please find the included USB-stick

## 5.3 Alarms, Bovibooster WD System Rotary



### **Risk of chemical spray**

Always wear safety goggles and gloves when you do work on the Bovibooster WD System Rotary

---

### 5.3.1 Alarm signals

Alarm: The yellow light will flash for 1 second with a 1 second interval



When the system is in Alarm 1, **all wash functions will be disabled.**

---

#### 5.3.1.1 How to identify

#### Cause

#### 5.3.1.2 How to release

Push the **Robot I** Wash Test key, to release the alarm.



*When the alarm is released, the system will automatically try to prime the water tank.*

---

#### 5.3.1.3 Troubleshooting

The alarm can be caused by several things, check the list below for possible causes.

- Check water supply. The alarm could be caused by very poor water flow.
- Check water valve

## 6 Frost Protection



To protect the system against frost damage, during periods of temperatures below 0 °C, empty both the wash and care system completely of liquid.

---

## 6.1 Empty wash system of liquid

---



### **Risk of chemical spray**

Always wear safety goggles and gloves when you do work on the Bovibooster WD System Rotary care or wash system.

---

1. Close and remove the water supply.
2. Disassemble water filter and empty water tank
3. Take out suction hose from care bucket and push test button until empty

## 7 Maintenance



### **Risk of chemical spray**

Always wear safety goggles and gloves when you do work on the Bovibooster WD System Rotary care or wash system.

---



The Bovibooster WD System Rotary does not require a lot of maintenance, but please uphold the maintenance instructions below to ensure that the Bovibooster WD System Rotary will keep functioning as intended.

---



If you have any questions, please contact your dealer or service provider.

---

### 7.1 Weekly Visual Inspection

- Check the system for leakages or damages.
- Check both wash and care nozzle spray pattern and angles, does the spray cover the hoofs as intended?

### 7.2 Semiannually

- Clean water tank filter

### 7.3 Annually

- Check/clean nozzles and replace if needed
- Replace the PD15 care pump exhaust regulator



## 7.4 Trouble Shooting

Symptom	Possible cause	Action
<b>Wash spray pattern, pressure or angle is incorrect.</b>	Nozzles are clogged or dirty.	Clean nozzles
	Nozzles are damaged.	Replace nozzles, check Nozzle bar
	Leakage in the wash tube.	Check wash spray tube and replace if needed.
	Parts in nozzle bar might be broken.	Replace broken parts.
<b>No care spray is applied to the hooves.</b>	The care spray container is empty.	Replace the container
	No air pressure to PD15 pump.	Check air supply.
	The care spray suction lance filter might be clogged.	Clean the filter.

## 8 Disposal

Disposing this product correctly will help save valuable resources and prevent any potential negative effects on human health and the environment, which could otherwise arise from inappropriate waste handling.

Decommissioning and disassembly of the product can be dangerous and must be done only by qualified recycling organizations. All components must be disposed in compliance with the local rules and regulations.

Lubricants and fluids must be disposed correctly to prevent pollution of the environment. Read the safety data sheets of the used lubricants and fluids for correct disposal. All lubricants and fluids must be disposed in compliance with the local rules and regulations.

Contact your local authority or your dealer for further details.

## 9 Glossary of terms

A:	Ampere
Approx:	Approximately
cm:	Centimeter
EU:	European Union
Gal:	Gallon
In:	Inches
kg:	Kilogram
l/m:	Liter per minute
m:	Meter
mA:	Milli-Amperes
ml:	Milliliter
Nm:	Newton meter
Oz:	Ounce
Psi:	Pounds per square inch
sec:	seconds
V:	Volt
Vac:	Voltage in Alternating Current
Vdc:	Voltage in Direct Current

## 10 EC-Declaration of Conformity

EF OVERENSTEMMELSESERKLÆRING  
EC DECLARATION OF CONFORMITY

CE-mærke er anbragt: 2019

EF-OVERENSTEMMELSESERKLÆRING

CE mark placed: 2019

EC-DECLARATION OF CONFORMITY

Heinagergaard I/S Sejrupvej 27 7323 Give Denmark

erklærer hermed på eget ansvar at: **LELY METEOR**

herewith, under our own responsibility declares: **LELY METEOR**

er fremstillet i overensstemmelse med følgende direktiver

is manufactured in compliance with the following directives

- 2006/42/EF Møskindirektivet
- 2006/42/EC Machinery Directive

i henhold til følgende europæiske standarder

relating to these European Standards

- EN 60204-1
- DS/EN ISO 12100-2
- DS/EN ISO 12100-1
- EN 61000-6-2:2016
- EN 61000-6-3:2007
- EN 61000-3-2:2014
- EN 61000-3-3:2013



Give, Denmark 2019-30-04

Henrik Hein Jörgensen

Heinagergaard I/S 30-04-2019

